

Boat Rental Information

PONTOON BOATS

8 Passenger /26' long with half canopy cover

Single Decker

\$125.00/week day

\$145.00/weekend day

\$75.00/half day

\$75.00 deposit required

Double Decker with Slide

\$185.00/week day

\$225.00/weekend day

\$135.00/half day

\$150.00 deposit required

Call For Reservations

*Reservations taken for full day only.

FISHING BOATS

4 Passenger/With 8 h.p. motor

\$45.00/day

\$6.00/hour (\$24.00 minimum)

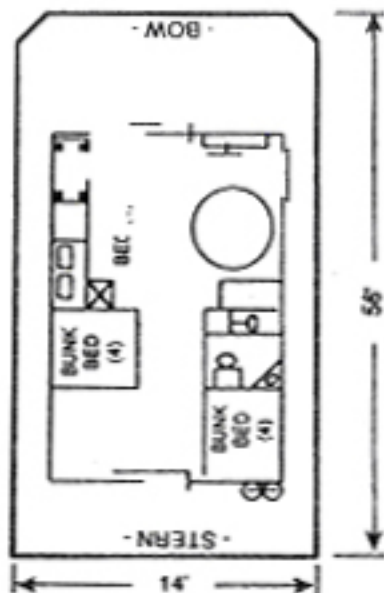
4 hrs. or return time whichever comes first

* No reservations taken, none required

Pontoon and Fishing Boat Rental Policies

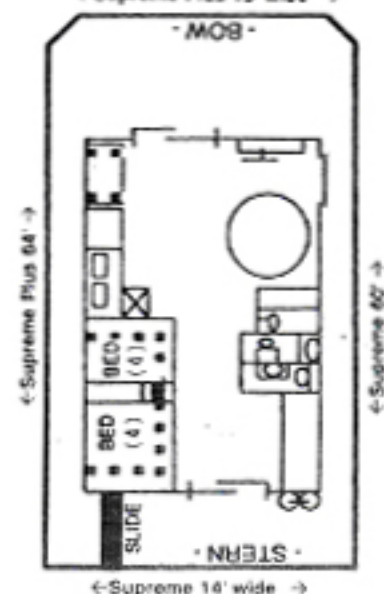
- * The renter must be 18 years of age.
- * The security deposit on boat rentals does not apply to the rental fee.
- * Full payment required before departure.
- * The policy on deposits is the same for both houseboats and pontoons.
- * All boat rentals are subject to 6% KY sales tax.
- * Return times are posted in the shop store in accordance with DST.
- * Gas & Oil are at the expense of the renter and not included in deposit.
- * The renter is responsible for damages to the boat or motor.
- * Never leave the dock in a boat without a lifejacket for each person on board.
- * Reservations taken for full day only.
- * Renters with reservations must be there or notify the marina by 9am the day of the rental.
- * No refunds due to weather.

←14' wide →



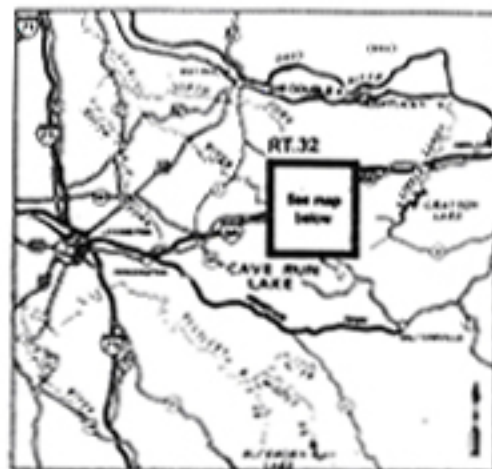
VIP

←Supreme Plus 15' wide →



VIP SUPREME & SUPREME PLUS
CUDDY CABINS W/2 BEDS

←Supreme 14' wide →



Located off I-64 east of Lexington, Kentucky at Exit 133. Cave Run Lake lies within the Daniel Boone National Forest and extends into Bath, Menfee, Morgan and Rowan counties. The surface area of Cave Run Lake covers 8,270 acres.



BOAT RENTAL INFORMATION

Cave Run Marinas, Inc.
P.O. Box 174
Morehead, Kentucky 40351

TWO LOCATIONS

Scott Creek Marina
Morehead, Kentucky
(606) 784-9666

E-Mail: crm7823@alltel.net
KY 801, 1 1/2 miles south of Dam
Large Parking Lot
200 feet past Scott Creek Boat Ramp



Long Bow Marina
Frenchburg, Kentucky
(606) 768-2929

On Beaver Creek, KY 1274
Five miles from Frenchburg

Managed in cooperation with the
U.S.D.A. - FOREST SERVICE