

# TRAILS

**DANIEL BOONE**  
***National Forest***  
Morehead Ranger District

U.S.D.A.  
Forest Service

White Sulphur ATV Trail  
#124

---

Start: Trailhead parking area on FDR 105  
End: Trailhead parking area on FDR 105  
Length: 20.0 Miles

Difficulty Level: More Difficult  
Connections: White Sulphur Trail  
USGS Quad: Farmers and Salt Lick  
Closures: Closed to all uses except hiking from December 1<sup>st</sup> to April 30<sup>th</sup>.

Trail Description:

The White Sulphur ATV trail consists of a system of trail segments arranged in connecting loops. It is located northwest of White Sulphur Road FDR 105 and south of Salt Lick. The trail is marked with orange blazes.

The White Sulphur ATV trail uses old roads and constructed trail to complete its entire route. The trail is located in moderately rugged terrain with some sections of trail located on ridge-tops and others on side-slopes. The trail is designed for use by novice to moderately experienced riders. There are no segments that would require expert-riding skills however some segments may be challenging to novice riders. These areas are marked on the trail map and with markers along the trail.

**Please remember to tread lightly.**

**Travel only where permitted.** Use only trails that are open to vehicles or other forms of travel. Cutting across switchbacks or taking shortcuts destroys vegetation and trails.

**Respect the rights of others.** Be courteous to other users who also want to enjoy the land for their activities. Be considerate; honor their desire for a peaceful backcountry experience.

**Educate yourself.** Find out which areas and routes are open. Obtain travel maps and regulations, comply with signs and barriers, and respect the rights or private property owners.

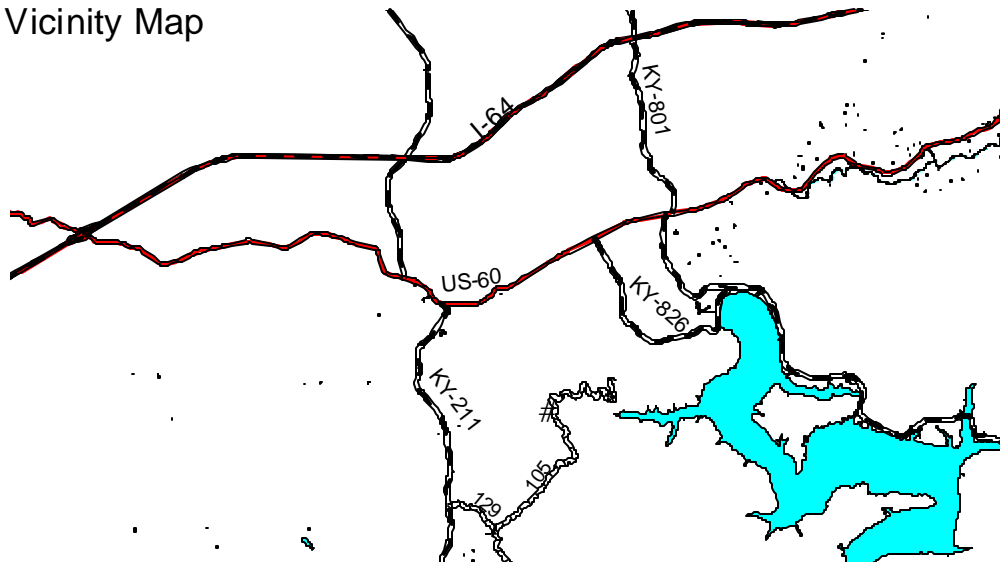
**Avoid sensitive areas at all times.** Sensitive areas include streams, lakeshores, meadows, muddy roads and trails, and steep hillsides. Avoid wildlife and livestock.

**Drive and travel responsibly.** Protect the forests, lands, and waters that you enjoy. Help preserve the beauty of the land and help preserve the opportunity to enjoy it.

**A recreation pass is required to use this trail.** Trail users will be required to purchase a recreation pass to use this trail. The following types of passes are available:

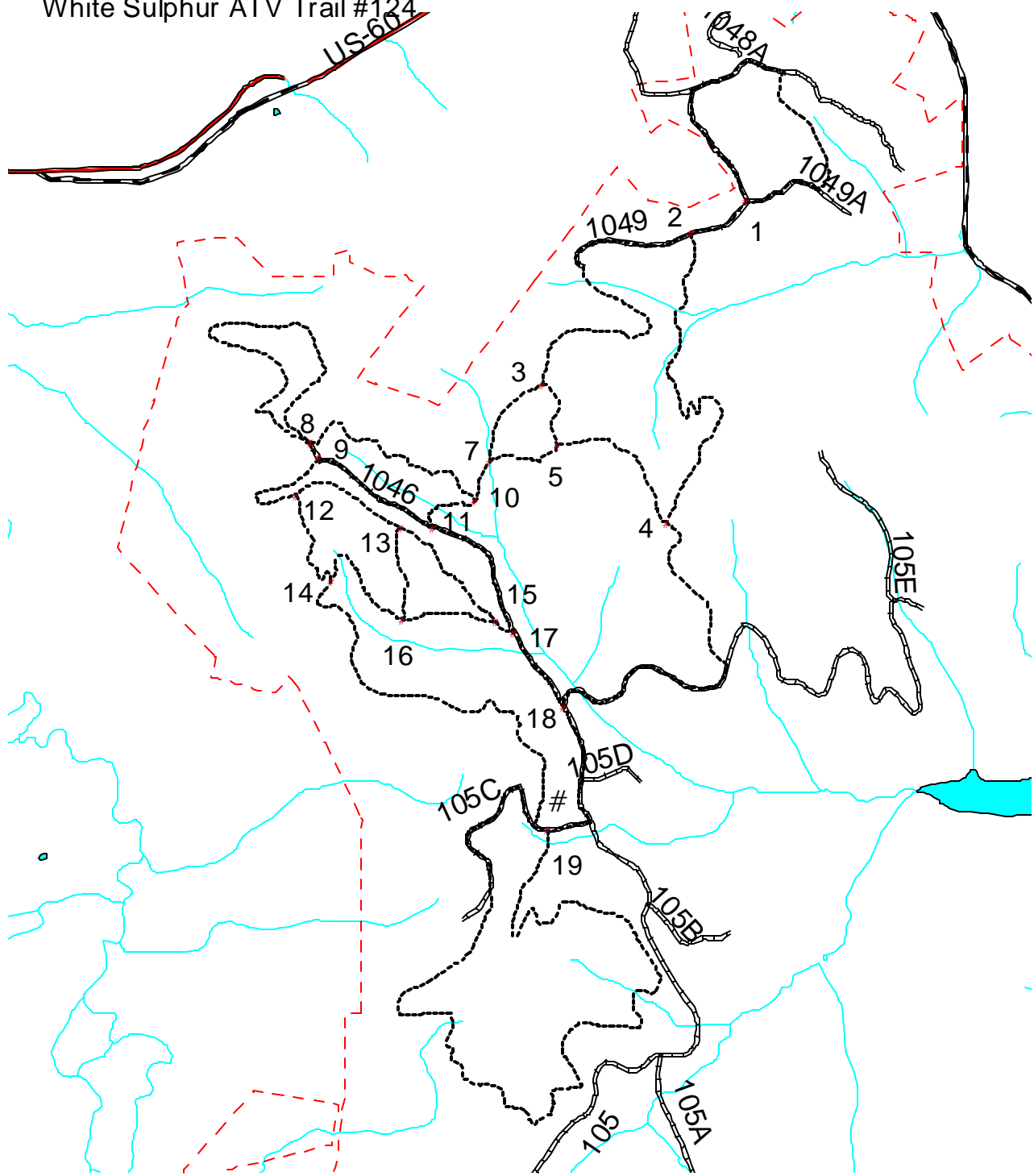
TYPE OF PASS	PRICE	KIND OF PASS
1-day (valid until noon the day after purchase)	\$5.00	Tag that attaches to handle bar of ATV
3-day (valid until noon the fourth day from purchase)	\$12.00	Tag that attaches to handle bar of ATV
Annual pass	\$36.00	Sticker that will be affixed to ATV before use of trail.








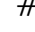

Vicinity Map




**(Highest point 1060 feet at the head of Hickory Hollow, lowest point 860 feet along FDR 1048; elevation change 200 feet.)**

# White Sulphur ATV Trail #124



-  Trail intersections
-  Forest Service Roads
-  US Highways
-  State Highways
-  ATV Trail Route
-  Boundary of National Forest Land
-  # Trailhead Parking Area
-  Lakes and Ponds
-  Streams



N  
  
 JFL  
 09-07-2001