

BOAT RENTAL INFORMATION

Cave Run Marinas, Inc.

P.O. Box 174 • Morehead, Kentucky 40351

TWO LOCATIONS

2010



2010

Scott Creek Marina

Morehead, Kentucky

(606) 784-9666

KY 801, 1 1/2 miles south of Dam

Houseboats • Pontoons • Fishing Boats • Pedal Boats

Long Bow Marina

Frenchburg, Kentucky

(606) 768-2929

On Beaver Creek, KY 1274

Fishing Boats • Pedal Boats

Visit us on the web at:

www.CaveRunMarinas.com

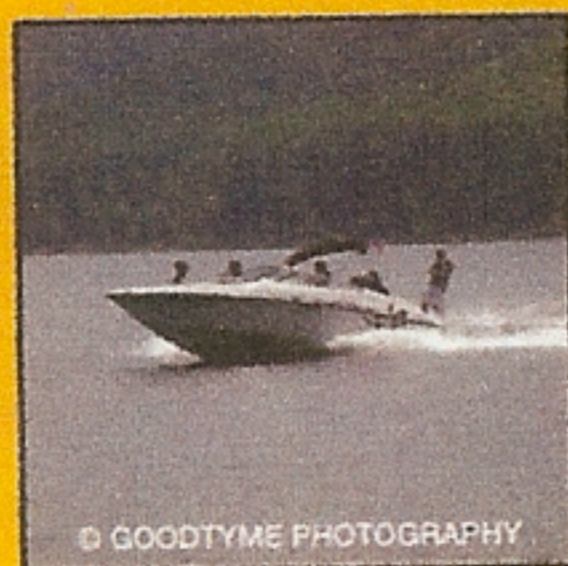
COME ENJOY THE MANY ACTIVITIES ON CAVE RUN LAKE

Full-Service Ship Store and Seasonal Restaurant

SCOTT CREEK MARINA



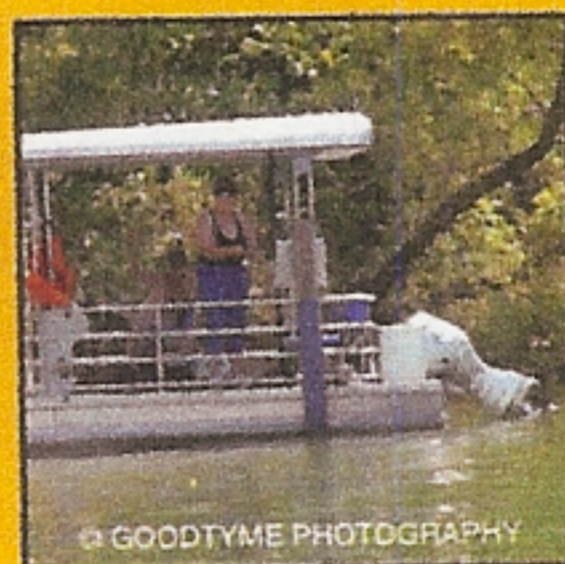
SAILING



WATER SKIING



TUBING



FISHING

AND BOAT RENTALS

SUPREME HOUSEBOAT



OFF SEASON:

April 2 - June 27

Aug 2 - Oct 18

IN SEASON:

June 28 - Aug 1

Labor Day Weekend

DEPART MONDAY

RETURN FRIDAY

\$1245.00 In Season

\$960.00 Off Season

DEPART FRIDAY

RETURN MONDAY

\$1245.00 In Season

\$960.00 Off Season

DEPART MONDAY OR FRIDAY (7-DAY)

\$1945.00 In Season

\$1560.00 Off Season



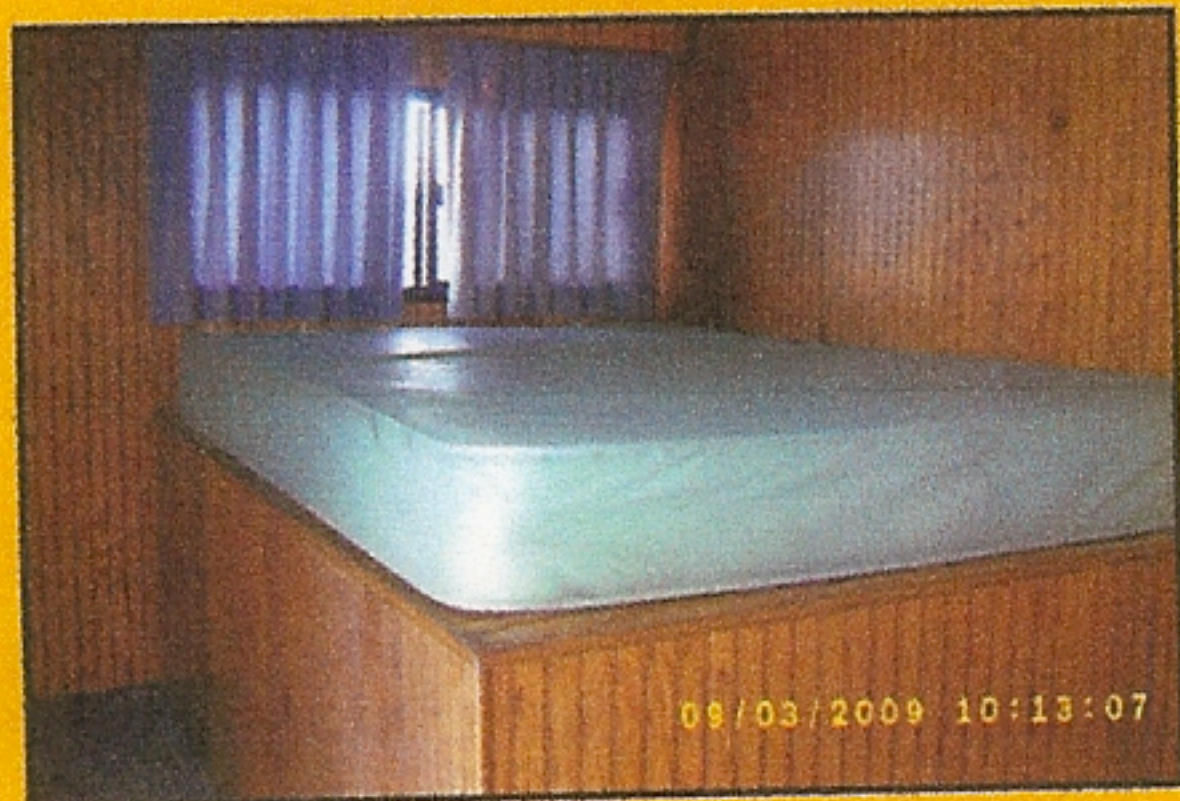
SUPREME PLUS HOUSEBOAT



© GOODYME PHOTOGRAPHY



09/03/2009 10:09:57



09/03/2009 10:13:07

OFF SEASON:

April 2 - June 27

Aug 2 - Oct 18

IN SEASON:

June 28 - Aug 1

Labor Day Weekend

DEPART MONDAY

RETURN FRIDAY

\$1695.00 In Season

\$1410.00 Off Season

DEPART FRIDAY

RETURN MONDAY

\$1695.00 In Season

\$1410.00 Off Season

DEPART MONDAY OR FRIDAY (7-DAY)

\$2395.00 In Season

\$2010.00 Off Season

HOUSEBOAT FEATURES AND EQUIPMENT

SUPREME 14'X60' (SLEEPS 10): The Supreme offers a stove, refrigerator, hot water and shower. You'll also enjoy such features as a generator for A.C. power, bath & a half, air conditioning, microwave & TV & DVD player for night-time entertainment, with the extra comfort of separate sleeping quarters, the added fun of a slide, & the convenience of a canopy on the top deck.

SUPREME PLUS 15'X64' (SLEEPS 10): Step on board our modern, wide-bodied boat with all the same amenities as the Supreme but with the added luxuries of a more spacious cabin, central heat & air, and private sleeping quarters. Also includes one fishing boat at no extra expense.

ALL HOUSE BOATS INCLUDE...

Kitchen utensils, gas grill, ice chest, front deck table, fresh water, life jackets, flush toilet, sewage holding tanks, 12 volt D.C. current, powered by outboard motors, gas range and oven and equipped with Sirius Satellite Radio. **Note: Blankets, pillows, sheets and towels are not provided. Bring your own deck chairs.**

HOUSEBOAT RULES AND REGULATIONS

- ★ Eighty % (80%) of the deposit refundable only if cancellation notice is received 21 days prior to departure date. If the cancellation is made within 21 days of the departure date, deposit is NOT refundable.
- ★ Passengers are responsible for cleaning boats before return. All garbage must be removed from the boat and carried off the dock, or a CASH PENALTY WILL BE CHARGED.
- ★ Rental fee must be paid before your cruise begins. The deposit is not included in the rental fee.
- ★ Deposit will be refunded after boat returns to the dock, if the boat is clean and free of damage. Renter assumes liability for damages to rental boat and or third party boat.
- ★ The renter must be at least 21 years old.
- ★ You will be escorted in and out of the harbor by our personnel. Do not return to the dock unescorted. Wait in the harbor until one of our employees comes out to meet you.
- ★ All rentals must leave the marina one hour before sunset in order to properly secure the boat before dark. If not out of the harbor before dark, the rental cannot leave.
- ★ One fishing boat can be rented at half price with rental of a Supreme.
- ★ Average gas consumption: Houseboat engines - 2-4 gallon per hour.

Labor Day Weekend subject to in season rates.

Gas & Oil are not included in rental rate or deposit.

ALL HOUSEBOATS - \$500.00 Deposit

ALL LATE CANCELLATIONS AND NO SHOWS:

DEPOSIT NONREFUNDABLE AND BOAT WILL BE RE-RENTED

PONTOON BOATS

SINGLE DECKER

8 Passenger

\$125.00/week day

\$145.00/weekend day

and holidays

\$125.00 deposit required



DOUBLE DECKER WITH SLIDE

10 passenger

\$185.00/week day

\$225.00 weekend day

and holidays

\$185.00 deposit required

Rental hours posted in store

FISHING BOATS



4 PASSENGER WITH 8 H.P. MOTOR

\$45.00/day or
30.00 Minimum

*4 hrs. or return time
whichever comes first*

*Renter must be 18 with valid I.D.
No reservations taken, none required
Rental hours posted in store*

PEDAL BOATS



\$10.00 for first hour
\$6.00 for each hour afterward

Children 13 & under must be accompanied by adult.

Ages 14 to 17 must have parental consent.

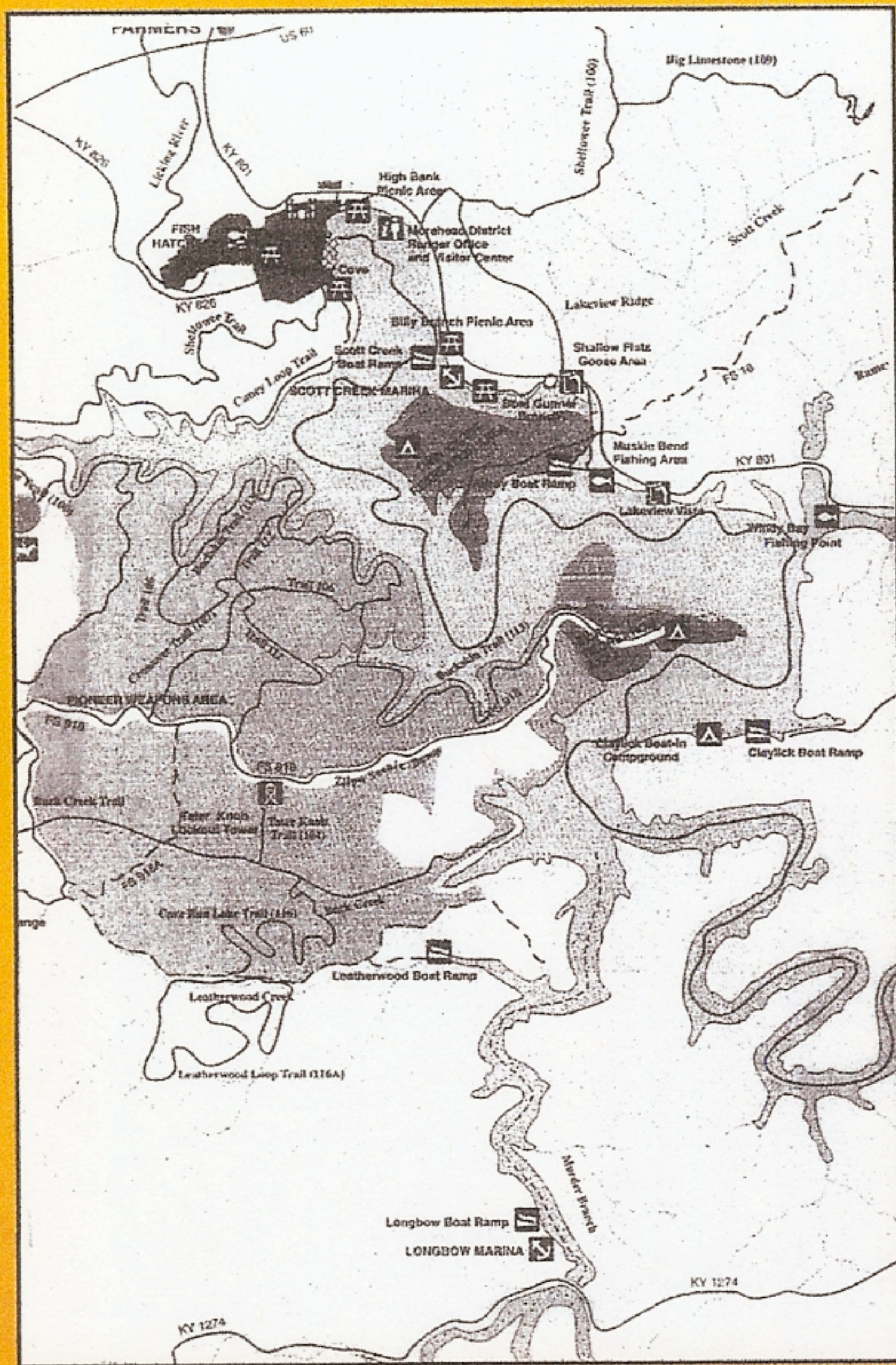
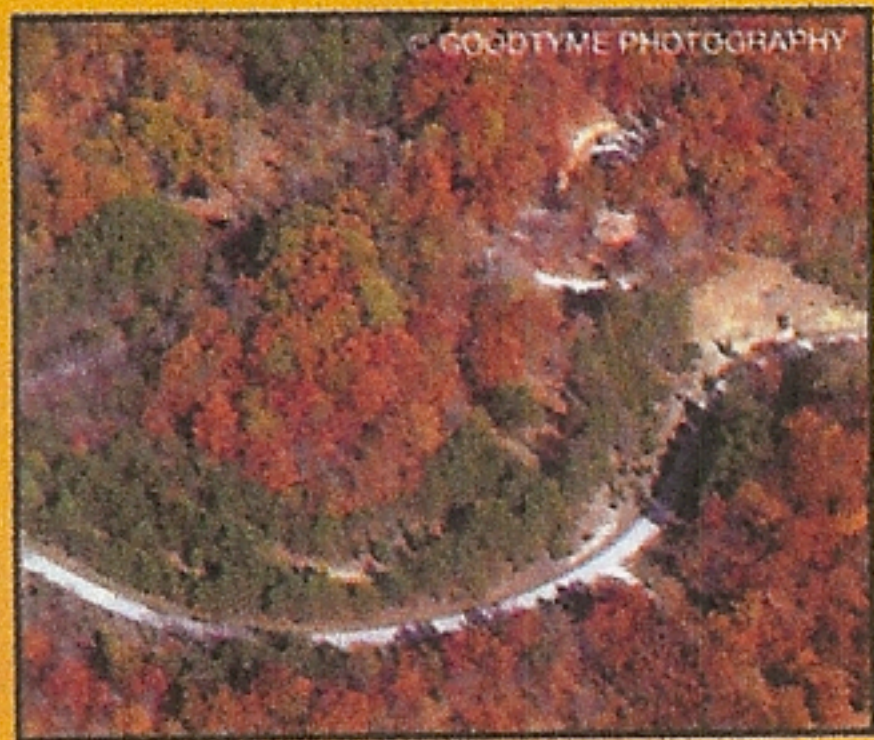
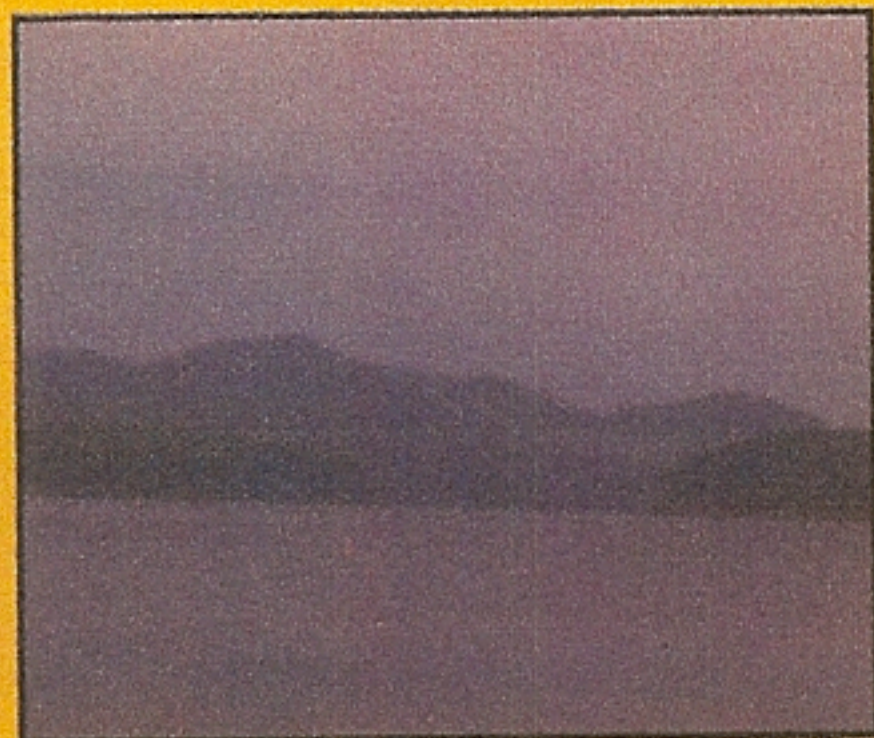
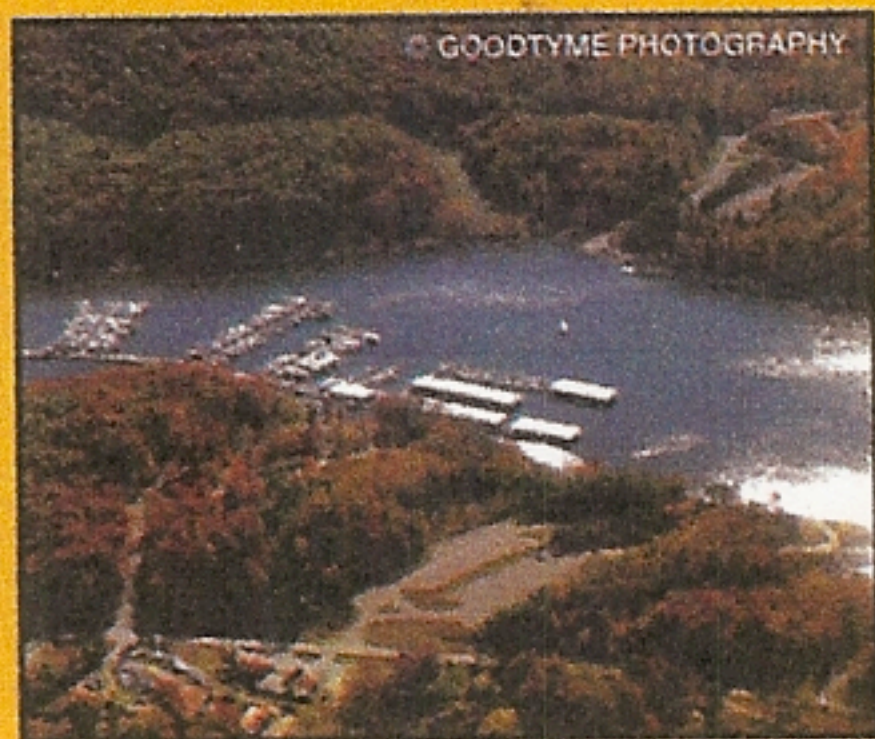
PONTOON AND FISHING BOAT RENTAL POLICIES

- ★ The renter must be 18 years of age.
- ★ The security deposit on boat rentals does not apply to the rental fee.
- ★ Full payment required before departure.
- ★ The policy on deposits is the same for both houseboats and pontoons.
- ★ All boat rentals are subject to 6% KY sales tax.
- ★ Fishing and pontoon boats are rented daylight hours only.
Rental hours posted in store.
- ★ Gas & Oil are at the expense of the renter and not included in deposit.
- ★ Renter is responsible for damages to the boat or motor, or third party boats.
- ★ Never leave the dock in a boat without a life jacket for each person on board.
- ★ Renters with reservations must be there or notify the marina by 10 a.m. the day of the rental or renter will forfeit deposit and boat will be re-rented.
- ★ No refunds due to weather.
- ★ Absolutely No Pets.

Cave Run Lake

Picturesque Cave Run Lake, on the Licking River, was constructed by the U.S. Army Corps of Engineers primarily as a flood control project. Construction was completed in 1969 and the project became operational in 1974 providing flood protection to the lower Licking River valley.

The 8,270 acre lake is almost entirely within the boundaries of the Daniel Boone National Forest. Most of the acquired land was transferred to the Forest Service for development and management.



**Managed in cooperation with the
U.S.D.A. - FOREST SERVICE**